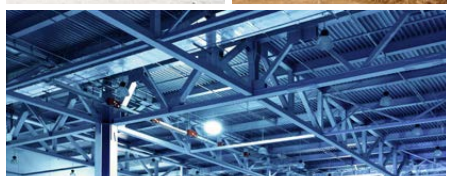


GLOBALTM
ELECTRIC AND INDUSTRIAL PRODUCTS

▶▶▶ **Electrical
&
Industrial**



Product Catalog
Edition VIII



Our Company

GEIP is a subsidiary company & brand of Fanlight Inc, encompassing a wide range of Electrical and Industrial products to support our existing and new business partners. Fanlight Inc, has a long history of manufacturing and distribution around the world with strong links to the lighting and electrical industries. We opened our USA division nearly 15 years ago and have experienced substantial growth throughout these aforementioned years providing further opportunities to our numerous customers. We now have 3 distribution centers located in North America statically located to efficiently serve our customers, as customer service is our number 1 priority.



Content

Weatherproof

Section 01 - Boxes	4
Section 02 - Covers	8
Section 03 - Lampholders & Covers	13
Section 04 - Accessories	14

Conduit Bodies

Section 05 - Rigid Body - Type C, LB, LL, LR, T, SLB	16 - 17
--	---------

Flexible Conduit

Section 06 - Aluminum, Steel, Liquid Tight	18
Section 07 - Non Metallic, Non Metallic Reels	19

Electrical Fittings

Section 08 - Liquid Tight - Straight & 900	20
Section 09 - Non Metallic - Straight & 900	21
Section 10 - EMT Connectors	22 - 24
Section 11 - EMT Couplings	25
Section 12 - MC Connectors	26
Section 13 - UF Connectors, Saddle Connectors, Cable Clamps	27

Straps & Hangers

Section 14 - EMT Straps	28
Section 15 - Rigid Straps	29
Section 16 - Universal Hangers	30

Misc

Section 17 - Kick Plates, Jack Chain, Temporary Lighting, Application Cords	31
---	----

Motor Control

Section 18 - Enclosures	34
Section 19 - IEC Contactors & Coils	35 - 37
Section 20 - Thermal Overloads	38
Section 21 - Definite Purpose Contactors	39 - 40
Section 22 - Manual Motor Starters	41
Section 23 - Enclosed Metal Motor Starters	42
Section 24 - Electronic Timers	43
Section 25 - Wire Duct	44
Section 26 - DIN Rail	45
Section 27 - Disconnects	46
Section 28 - Cable Glands	47
Section 29 - Tower Stack Lights	48 - 49
Section 30 - Push Buttons	50 - 55

Weatherproof Boxes



1/2" 1 Gang Weatherproof Boxes

Product Code	SKU Code	Color	Depth	# of Holes	Box Qty
WP1B50/3	8189	Gray	2" Deep	3	20
WP1B50/3WH	8191	White	2" Deep	3	20
WP1B50/3BZ	8190	Bronze	2" Deep	3	20
WP1B50/4	8192	Gray	2" Deep	4	20
WP1B50/4WH	8194	White	2" Deep	4	20
WP1B50/4BZ	8193	Bronze	2" Deep	4	20
WP1B50/5	8195	Gray	2" Deep	5	20
WP1B50/5WH	8197	White	2" Deep	5	20
WP1B50/5BZ	8196	Bronze	2" Deep	5	20
WP1B50/5X	8198	Gray	2" Deep	5	20



3/4" 1 Gang Weatherproof Boxes

Product Code	SKU Code	Color	Depth	# of Holes	Box Qty
WP1B75/3	8199	Gray	2" Deep	3	20
WP1B75/3WH	8201	White	2" Deep	3	20
WP1B75/3BZ	8200	Bronze	2" Deep	3	20
WP1B75/4	8202	Gray	2" Deep	4	20
WP1B75/4WH	8204	White	2" Deep	4	20
WP1B75/4BZ	8203	Bronze	2" Deep	4	20
WP1B75/5	8205	Gray	2" Deep	5	20
WP1B75/5WH	8207	White	2" Deep	5	20
WP1B75/5BZ	8206	Bronze	2" Deep	5	20
WP1B75/5X	8208	Gray	2" Deep	5	20



1" 1 Gang Weatherproof Boxes

Product Code	SKU Code	Color	Depth	# of Holes	Box Qty
WP1B100/3	8209	Gray	2" Deep	3	20
WP1B100/5X	8211	Gray	2" Deep	5	20



Weatherproof Boxes



1/2" 1 Gang Weatherproof Deep Boxes

Product Code	SKU Code	Color	Depth	# of Holes	Box Qty
WP1DB50/3	8212	Gray	2 5/8" Deep	3	15
WP1DB50/4	8213	Gray	2 5/8" Deep	4	15
WP1DB50/5X	8214	Gray	2 5/8" Deep	5	15



3/4" 1 Gang Weatherproof Deep Boxes

Product Code	SKU Code	Color	Depth	# of Holes	Box Qty
WP1DB75/3	8215	Gray	2 5/8" Deep	3	15
WP1DB75/4	8216	Gray	2 5/8" Deep	4	15
WP1DB75/5X	8217	Gray	2 5/8" Deep	5	15



1" 1 Gang Weatherproof Deep Boxes

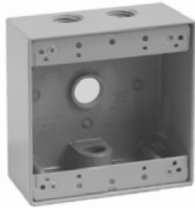
Product Code	SKU Code	Color	Depth	# of Holes	Box Qty
WP1DB100/3	8218	Gray	2 5/8" Deep	3	15
WP1DB100/5X	8220	Gray	2 5/8" Deep	5	15





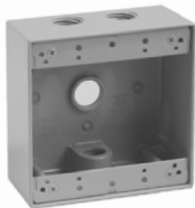
1/2" 2 Gang Weatherproof Boxes

Product Code	SKU Code	Color	Depth	# of Holes	Box Qty
WP2B50/3	8228	Gray	2 3/16" Deep	3	15
WP2B50/3WH	8230	White	2 3/16" Deep	3	15
WP2B50/3BZ	8229	Bronze	2 3/16" Deep	3	15
WP2B50/4	8231	Gray	2 3/16" Deep	4	15
WP2B50/5	8232	Gray	2 3/16" Deep	5	15
WP2B50/5WH	8234	White	2 3/16" Deep	5	15
WP2B50/5BZ	8233	Bronze	2 3/16" Deep	5	15
WP2B50/5X	8235	Gray	2 3/16" Deep	5	15
WP2B50/7	8237	Gray	2 3/16" Deep	7	15
WP2B50/7X	8238	Gray	2 3/16" Deep	7	15
WP2B50/9	8239	Gray	2 3/16" Deep	9	15



3/4" 2 Gang Weatherproof Boxes

Product Code	SKU Code	Color	Depth	# of Holes	Box Qty
WP2B75/3	8240	Gray	2 3/16" Deep	3	15
WP2B75/3WH	8242	White	2 3/16" Deep	3	15
WP2B75/3BZ	8241	Bronze	2 3/16" Deep	3	15
WP2B75/4	8243	Gray	2 3/16" Deep	4	15
WP2B75/5	8244	Gray	2 3/16" Deep	5	15
WP2B75/5WH	8246	White	2 3/16" Deep	5	15
WP2B75/5BZ	8245	Bronze	2 3/16" Deep	5	15
WP2B75/5X	8247	Gray	2 3/16" Deep	5	15
WP2B75/7	8249	Gray	2 3/16" Deep	7	15
WP2B75/7X	8250	Gray	2 3/16" Deep	7	15
WP2B75/9	8251	Gray	2 3/16" Deep	9	15



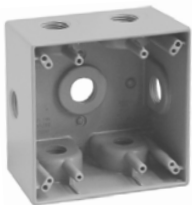
1" 2 Gang Weatherproof Boxes

Product Code	SKU Code	Color	Depth	# of Holes	Box Qty
WP2B100/3	8252	Gray	2 3/16" Deep	3	15
WP2B100/3WH	8254	White	2 3/16" Deep	3	15
WP2B100/3BZ	8253	Bronze	2 3/16" Deep	3	15
WP2B100/4	8255	Gray	2 3/16" Deep	4	15
WP2B100/5X	8256	Gray	2 3/16" Deep	5	15



1/2" 2 Gang Weatherproof Deep Boxes

Product Code	SKU Code	Color	Depth	# of Holes	Box Qty
WP2DB50/5	8221	Gray	2 5/8" Deep	5	10
WP2DB50/7X	8222	Gray	2 5/8" Deep	7	10



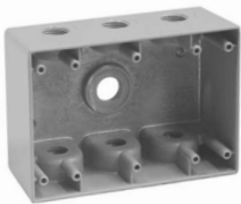
3/4" 2 Gang Weatherproof Deep Boxes

Product Code	SKU Code	Color	Depth	# of Holes	Box Qty
WP2DB75/5	8223	Gray	2 5/8" Deep	5	10
WP2DB75/7X	8224	Gray	2 5/8" Deep	7	10



1" 2 Gang Weatherproof Deep Boxes

Product Code	SKU Code	Color	Depth	# of Holes	Box Qty
WP2DB100/5	8225	Gray	2 5/8" Deep	5	10
WP2DB100/5X	8226	Gray	2 5/8" Deep	5	10
WP2DB100/7X	8227	Gray	2 5/8" Deep	7	10



3 Gang Weatherproof Deep Boxes

Product Code	SKU Code	Color	Depth	# of Holes	Box Qty
WP3B50/7	8257	Gray	2 5/8" Deep	7	10
WP3B75/7	8258	Gray	2 5/8" Deep	7	10
WP3B100/7	8259	Gray	2 5/8" Deep	7	10



4" Round Weatherproof Boxes

Product Code	SKU Code	Color	Depth	# of Holes	Box Qty
WPBRD50	8319	Gray	1 5/8" Deep	5	20
WPBRD50WH	8321	White	1 5/8" Deep	5	20
WPBRD50BZ	8320	Bronze	1 5/8" Deep	5	20
WPBRD75	8322	Gray	1 5/8" Deep	5	20





1 Gang Blank Covers

Product Code	SKU Code	Color	Box Qty
WPSBC	8260	Gray	40
WPSBCWH	8261	White	40
WPSBCBZ	8262	Bronze	40



2 Gang Blank Covers

Product Code	SKU Code	Color	Box Qty
WPTBC	8263	Gray	20
WPTBCWH	8264	White	20
WPTBCBZ	8265	Bronze	20



4" Round Blank Covers

Product Code	SKU Code	Color	Box Qty
WPRBC	8316	Gray	25
WPRBCWH	8318	White	25
WPRBCBZ	8317	Bronze	25



1 Gang Toggle Switch

Product Code	SKU Code	Color	Box Qty
WPTSC1	8266	Gray	25
WPTSC1WH	8267	White	25
WPTSC1BZ	8268	Bronze	25



2 Gang Toggle Switch

Product Code	SKU Code	Color	Box Qty
WPTSC2	8269	Gray	15



1/2" 1 Hole Lampholder Covers

Product Code	SKU Code	Color	Box Qty
WPCT150	8271	Gray	25
WPCT150WH	8272	White	25
WPCT150BZ	8273	Bronze	25



1/2" 3 Hole Lampholder Covers

Product Code	SKU Code	Color	Box Qty
WPCT350	8274	Gray	25
WPCT350WH	8276	White	25
WPCT350BZ	8275	Bronze	25



1 Gang Vertical Single Switch Covers

Product Code	SKU Code	Color	Box Qty
WPVP1S	8277	Gray	25
WPVP1SWH	8278	White	25
WPVP1SBZ	8279	Bronze	25



1 Gang 20AMP Receptacle Cover

Product Code	SKU Code	Color	Box Qty
WPVP016	8295	Gray	25



1 Gang 30AMP Receptacle Cover

Product Code	SKU Code	Color	Box Qty
WPVP017	8296	Gray	25





1 Gang Vertical Duplex Receptacle Cover

Product Code	SKU Code	Color	Box Qty
WPVP1D	8297	Gray	25
WPVP1DWH	8298	White	25
WPVP1DBZ	8299	Bronze	25



1 Gang Horizontal Duplex Receptacle Cover

Product Code	SKU Code	Color	Box Qty
WPHP1D	8280	Gray	25
WPHP1DWH	8281	White	25
WPHP1DBZ	8282	Bronze	25



1 Gang Vertical GFCI Cover

Product Code	SKU Code	Color	Box Qty
WPVP1G	8308	Gray	25
WPVP1GWH	8310	White	25
WPVP1GBZ	8309	Bronze	25



1 Gang Horizontal GFCI Cover

Product Code	SKU Code	Color	Box Qty
WPHP1G	8305	Gray	25
WPHP1GWH	8307	White	25
WPHP1GBZ	8306	Bronze	25



2 Gang Duplex Receptacle Cover

Product Code	SKU Code	Color	Box Qty
WPVP2D	8300	Gray	15



2 Gang Switch/Duplex Receptacle Cover

Product Code	SKU Code	Color	Box Qty
WPVP2SD	8304	Gray	15



2 Gang GFCI/Duplex Receptacle Cover

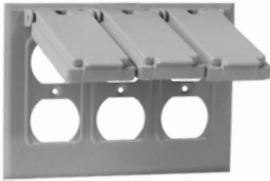
Product Code	SKU Code	Color	Box Qty
WPVP2GD	8311	Gray	15



2 Gang GFCI/GFCI Receptacle Cover

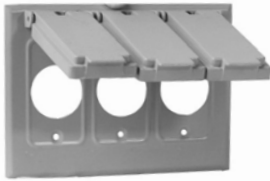
Product Code	SKU Code	Color	Box Qty
WPVP2G	8312	Gray	15





3 Gang Triple Duplex Receptacle Cover

Product Code	SKU Code	Color	Box Qty
WPVP3D	8313	Gray	15



3 Gang Single Switch Cover

Product Code	SKU Code	Color	Box Qty
WPVP3S	8314	Gray	15



3 Gang Vertical GFCI Cover

Product Code	SKU Code	Color	Box Qty
WPVP3G	8315	Gray	15



1/2" 1 Hole Round Lampholder Cover

Product Code	SKU Code	Color	# of Holes	Box Qty
WPCR150	8325	Gray	1	24
WPCR150WH	8327	White	1	24
WPCR150BZ	8326	Bronze	1	24



1/2" 3 Hole Round Lampholder Cover

Product Code	SKU Code	Color	# of Holes	Box Qty
WPCR350	8328	Gray	3	24
WPCR350WH	8330	White	3	24
WPCR350BZ	8329	Bronze	3	24



1/2" 3 Hole Round Directional Lampholder Cover

Product Code	SKU Code	Color	# of Holes	Box Qty
WPCR350A	8331	Gray	3	24
WPCR350AWH	8333	White	3	24
WPCR350ABZ	8332	Bronze	3	24



Flood Lampholder PAR38 with Gasket

Product Code	SKU Code	Color	Box Qty
WPLH1150	8334	Gray	25
WPLH1150WH	8336	White	25
WPLH1150BZ	8335	Bronze	25



Twin Flood Lampholder PAR38 with Gasket

Product Code	SKU Code	Color	Box Qty
WPLH2150DB	8340	Gray	24
WPLH2150DBWH	8342	White	24
WPLH2150DBBZ	8341	Bronze	24





1/2" 1 Gang Flanged Extension Boxes

Product Code	SKU Code	Color	Depth	Box Qty
WPEXF50/4	8283	Gray	1 9/16" Deep	18
WPEXF50/4WH	8285	White	1 9/16" Deep	18
WPEXF50/4BZ	8284	Bronze	1 9/16" Deep	18



3/4" 1 Gang Flanged Extension Boxes

Product Code	SKU Code	Color	Depth	Box Qty
WPEXF75/4	8286	Gray	1 9/16" Deep	18
WPEXF75/4WH	8288	White	1 9/16" Deep	18
WPEXF75/4BZ	8287	Bronze	1 9/16" Deep	18



1 Gang Extension Boxes

Product Code	SKU Code	Color	Depth	Box Qty
WPEXR1	8289	Gray	1" Deep	20
WPEXR1WH	8291	White	1" Deep	20
WPEXR1BZ	8290	Bronze	1" Deep	20



2 Gang Extension Boxes

Product Code	SKU Code	Color	Depth	Box Qty
WPEXR2	8292	Gray	1" Deep	20
WPEXR2WH	8294	White	1" Deep	20
WPEXR2BZ	8293	Bronze	1" Deep	20



1/2" Round Extension Ring

Product Code	SKU Code	Color	# of Holes	Box Qty
WPEXR50/4	8323	Gray	4	20



3/4" Round Extension Ring

Product Code	SKU Code	Color	# of Holes	Box Qty
WPEXR75/4	8324	Gray	4	20



1/2" Closure Plugs

Product Code	SKU Code	Color	Box Qty
WPPLUG1/2GY	8343	Gray	10
WPPLUG1/2WH	8345	White	10
WPPLUG1/2BZ	8344	Bronze	10



3/4" Closure Plugs

Product Code	SKU Code	Color	Box Qty
WPPLUG3/4GY	8346	Gray	10
WPPLUG3/4WH	8348	White	10
WPPLUG3/4BZ	8347	Bronze	10



1" Closure Plugs

Product Code	SKU Code	Color	Box Qty
WPPLUG1GY	8349	Gray	10
WPPLUG1WH	8351	White	10
WPPLUG1BZ	8350	Bronze	10



**Rigid C** with Steel Cover & Gasket

Product Code	SKU Code	Size	Box Qty
RCB/C50	8076	1/2"	10
RCB/C75	8077	3/4"	10
RCB/C100	8078	1"	5
RCB/C125	8079	1 1/4"	2
RCB/C150	8080	1 1/2"	2
RCB/C200	8081	2"	1
RCB/C250	8082	2 1/2"	1
RCB/C300	8083	3"	1
RCB/C350	8084	3 1/2"	1
RCB/C400	8085	4"	1

**Rigid LB** with Steel Cover & Gasket

Product Code	SKU Code	Size	Box Qty
RCB/LB50	8086	1/2"	10
RCB/LB75	8087	3/4"	10
RCB/LB100	8088	1"	5
RCB/LB125	8089	1 1/4"	2
RCB/LB150	8090	1 1/2"	2
RCB/LB200	8091	2"	1
RCB/LB250	8092	2 1/2"	1
RCB/LB300	8093	3"	1
RCB/LB350	8094	3 1/2"	1
RCB/LB400	8095	4"	1

**Rigid LL** with Steel Cover & Gasket

Product Code	SKU Code	Size	Box Qty
RCB/LL50	8096	1/2"	10
RCB/LL75	8097	3/4"	10
RCB/LL100	8098	1"	5
RCB/LL125	8099	1 1/4"	2
RCB/LL150	8100	1 1/2"	2
RCB/LL200	8101	2"	1
RCB/LL250	8102	2 1/2"	1
RCB/LL300	8103	3"	1
RCB/LL350	8104	3 1/2"	1
RCB/LL400	8105	4"	1

**Rigid LR** with Steel Cover & Gasket

Product Code	SKU Code	Size	Box Qty
RCB/LR50	8106	1/2"	10
RCB/LR75	8107	3/4"	10
RCB/LR100	8108	1"	5
RCB/LR125	8109	1 1/4"	2
RCB/LR150	8110	1 1/2"	2
RCB/LR200	8111	2"	1
RCB/LR250	8112	2 1/2"	1
RCB/LR300	8113	3"	1
RCB/LR350	8114	3 1/2"	1
RCB/LR400	8115	4"	1

**Rigid T** with Steel Cover & Gasket

Product Code	SKU Code	Size	Box Qty
RCB/T50	8116	1/2"	10
RCB/T75	8117	3/4"	10
RCB/T100	8118	1"	5
RCB/T125	8119	1 1/4"	2
RCB/T150	8120	1 1/2"	2
RCB/T200	8121	2"	1
RCB/T250	8122	2 1/2"	1
RCB/T300	8123	3"	1
RCB/T350	8124	3 1/2"	1
RCB/T400	8125	4"	1

**Service Entry ELLS** with Steel Cover & Gasket

Product Code	SKU Code	Size	Box Qty
SE/SLB50	8126	1/2"	10
SE/SLB75	8127	3/4"	10
SE/SLB100	8128	1"	5
SE/SLB125	8129	1 1/4"	2
SE/SLB150	8130	1 1/2"	2
SE/SLB200	8131	2"	1



Aluminum Flex Conduit

Product Code	SKU Code	Size	Length - ft
ALC038	8132	3/8"	100
ALC050	8133	1/2"	100
ALC075	8134	3/4"	100
ALC100	8135	1"	100
ALC125	8136	1 1/4"	50
ALC150	8137	1 1/2"	50
ALC200	8138	2"	25
ALC250	8139	2 1/2"	25
ALC300	8140	3"	25
ALC400	8142	4"	25



Steel Flex Conduit

Product Code	SKU Code	Size	Length - ft
STC038	8154	3/8"	100
STC050	8155	1/2"	100
STC075	8156	3/4"	100
STC100	8157	1"	100
STC125	8158	1 1/4"	50
STC150	8159	1 1/2"	50
STC200	8160	2"	25
STC250	8161	2 1/2"	25
STC300	8162	3"	25
STC400	8164	4"	25



Liquid Tight Flex Conduit

Product Code	SKU Code	Size	Length - ft
LTC038	8143	3/8"	100
LTC050	8144	1/2"	100
LTC075	8145	3/4"	100
LTC100	8146	1"	100
LTC125	8147	1 1/4"	50
LTC150	8148	1 1/2"	50
LTC200	8149	2"	25
LTC250	8150	2 1/2"	25
LTC300	8151	3"	25
LTC400	8153	4"	25



Non-Metallic Flex Conduit

Product Code	SKU Code	Size	Length - ft
NMC038	8165	3/8"	100
NMC050	8166	1/2"	100
NMC075	8167	3/4"	100
NMC100	8168	1"	100
NMC125	8169	1 1/4"	100
NMC150	8170	1 1/2"	50
NMC200	8171	2"	50

Non-Metallic Flex Conduit Reels

Product Code	SKU Code	Size	Length - ft
NMC050R	8172	1/2"	1000
NMC075R	8173	3/4"	800
NMC100R	8174	1"	500



Straight Liquid Tight Metallic Connector Zinc Diecast

Product Code	SKU Code	Size	Box Qty
LTS038	8054	3/8"	25
LTS050	8055	1/2"	20
LTS075	8056	3/4"	10
LTS100	8057	1"	5
LTS125	8058	1 1/4"	5
LTS150	8059	1 1/2"	2
LTS200	8060	2"	2
LTS250	8061	2 1/2"	1
LTS300	8062	3"	1
LTS350	8063	3 1/2"	1
LTS400	8064	4"	1



90° Liquid Tight Metallic Connector Zinc Diecast

Product Code	SKU Code	Size	Box Qty
LTA038	8065	3/8"	10
LTA050	8066	1/2"	10
LTA075	8067	3/4"	10
LTA100	8068	1"	5
LTA125	8069	1 1/4"	2
LTA150	8070	1 1/2"	2
LTA200	8071	2"	1
LTA250	8072	2 1/2"	1
LTA300	8073	3"	1
LTA350	8074	3 1/2"	1
LTA400	8075	4"	1



Straight Non-Metallic Connector			
Product Code	SKU Code	Size	Box Qty
NMS038	8175	3/8"	10
NMS050	8176	1/2"	25
NMS075	8177	3/4"	10
NMS100	8178	1"	5
NMS125	8179	1 1/4"	5
NMS150	8180	1 1/2"	2
NMS200	8181	2"	2



90° Non-Metallic Connector			
Product Code	SKU Code	Size	Box Qty
NMA038	8182	3/8"	10
NMA050	8183	1/2"	10
NMA075	8184	3/4"	10
NMA100	8185	1"	5
NMA125	8186	1 1/4"	5
NMA150	8187	1 1/2"	2
NMA200	8188	2"	2





Straight Squeeze Connector Zinc Diecast

Product Code	SKU Code	Size	Box Qty
SQC038	8456	3/8"	50
SQC050	8457	1/2"	25
SQC075	8458	3/4"	25
SQC100	8459	1"	10
SQC125	8460	1 1/4"	10
SQC150	8461	1 1/2"	50
SQC200	8462	2"	40
SQC250	8463	2 1/2"	10
SQC300	8464	3"	10
SQC350	8465	3 1/2"	1
SQC400	8466	4"	1



90° Squeeze Connector Zinc Diecast

Product Code	SKU Code	Size	Box Qty
SQCA038	8467	3/8"	50
SQCA050	8468	1/2"	25
SQCA075	8469	3/4"	15
SQCA100	8470	1"	5
SQCA125	8471	1 1/4"	10
SQCA150	8472	1 1/2"	5
SQCA200	8473	2"	5
SQCA250	8474	2 1/2"	5
SQCA300	8475	3"	5
SQCA350	8476	3 1/2"	1
SQCA400	8477	4"	1



EMT Compression Connector

Product Code	SKU Code	Size	Box Qty
SECN050	8366	1/2"	50
SECN075	8367	3/4"	25
SECN100	8368	1"	15
SECN125	8369	1 1/4"	10
SECN150	8370	1 1/2"	10
SECN200	8371	2"	10
SECN250	8372	2 1/2"	12
SECN300	8373	3"	12
SECN350	8374	3 1/2"	6
SECN400	8375	4"	6



EMT Compression Connector Insulated Throat			
Product Code	SKU Code	Size	Box Qty
SECN050i	8376	1/2"	50
SECN075i	8377	3/4"	25
SECN100i	8378	1"	15
SECN125i	8379	1 1/4"	10
SECN150i	8380	1 1/2"	10
SECN200i	8381	2"	10
SECN250i	8382	2 1/2"	12
SECN300i	8383	3"	12
SECN350i	8384	3 1/2"	6
SECN400i	8385	4"	6



EMT Raintight Compression Connector			
Product Code	SKU Code	Size	Box Qty
SECN050R	8386	1/2"	50
SECN075R	8387	3/4"	25
SECN100R	8388	1"	15
SECN125R	8389	1 1/4"	10
SECN150R	8390	1 1/2"	10
SECN200R	8391	2"	10
SECN250R	8392	2 1/2"	12
SECN300R	8393	3"	12
SECN350R	8394	3 1/2"	6
SECN400R	8395	4"	6



EMT Raintight Compression Connector Insulated Throat			
Product Code	SKU Code	Size	Box Qty
SECN050Ri	8396	1/2"	50
SECN075Ri	8397	3/4"	25
SECN100Ri	8398	1"	15
SECN125Ri	8399	1 1/4"	10
SECN150Ri	8400	1 1/2"	10
SECN200Ri	8401	2"	10
SECN250Ri	8402	2 1/2"	12
SECN300Ri	8403	3"	12
SECN350Ri	8404	3 1/2"	6
SECN400Ri	8405	4"	6



EMT Set Screw Connector

Product Code	SKU Code	Size	Box Qty
SESS050	8406	1/2"	50
SESS075	8407	3/4"	25
SESS100	8408	1"	20
SESS125	8409	1 1/4"	25
SESS150	8410	1 1/2"	25
SESS200	8411	2"	20
SESS250	8412	2 1/2"	12
SESS300	8413	3"	12
SESS350	8414	3 1/2"	10
SESS400	8415	4"	6



EMT Set Screw Connector Insulated Throat

Product Code	SKU Code	Size	Box Qty
SESS050i	8416	1/2"	50
SESS075i	8417	3/4"	25
SESS100i	8418	1"	20
SESS125i	8419	1 1/4"	25
SESS150i	8420	1 1/2"	25
SESS200i	8421	2"	20
SESS250i	8422	2 1/2"	12
SESS300i	8423	3"	12
SESS350i	8424	3 1/2"	10
SESS400i	8425	4"	6



EMT Set Screw Coupling

Product Code	SKU Code	Size	Box Qty
SEC050	8426	1/2"	50
SEC075	8427	3/4"	25
SEC100	8428	1"	20
SEC125	8429	1 1/4"	25
SEC150	8430	1 1/2"	25
SEC200	8431	2"	20
SEC250	8432	2 1/2"	12
SEC300	8433	3"	12
SEC350	8434	3 1/2"	10
SEC400	8435	4"	6



EMT Compression Coupling

Product Code	SKU Code	Size	Box Qty
SECP050	8436	1/2"	50
SECP075	8437	3/4"	25
SECP100	8438	1"	15
SECP125	8439	1 1/4"	10
SECP150	8440	1 1/2"	10
SECP200	8441	2"	10
SECP250	8442	2 1/2"	12
SECP300	8443	3"	12
SECP350	8444	3 1/2"	6
SECP400	8445	4"	6



EMT Raintight Compression Coupling

Product Code	SKU Code	Size	Box Qty
SECP050R	8446	1/2"	50
SECP075R	8447	3/4"	25
SECP100R	8448	1"	15
SECP125R	8449	1 1/4"	10
SECP150R	8450	1 1/2"	10
SECP200R	8451	2"	10
SECP250R	8452	2 1/2"	12
SECP300R	8453	3"	12
SECP350R	8454	3 1/2"	6
SECP400R	8455	4"	6


Multi Purpose MC Connector Insulated Throat

Product Code	SKU Code	Size	Box Qty
MAFC050	8360	1/2"	50


Multi Purpose Duplex MC Connector Insulated Throat

Product Code	SKU Code	Size	Box Qty
MAFC050/2	8361	1/2"	25


Single MC Connector

Product Code	SKU Code	Size	Box Qty
SG038	8364	3/8"	25


Double MC Connector

Product Code	SKU Code	Size	Box Qty
SG038/038	8365	3/8"	10



UF Connector

Product Code	SKU Code	Size	Box Qty
MUF050	8362	1/2"	25
MUF075	8263	3/4"	25



Saddle Connector

Product Code	SKU Code	Size	Box Qty
SC038	8358	3/8"	50
SC050	8359	1/2"	50



Romex Connector

Product Code	SKU Code	Size	Box Qty
CC050	8352	1/2"	100



Cable Clamp

Product Code	SKU Code	Size	Box Qty
CC075	8353	3/4"	25
CC100	8354	1"	25
CC125	8355	1 1/4"	10
CC150	8356	1 1/2"	10
CC200	8357	2"	5



EMT 1 hole Strap

Product Code	SKU Code	Size	Box Qty
E1S050	8010	1/2"	100
E1S075	8011	3/4"	100
E1S100	8012	1"	50
E1S125	8013	1 1/4"	25
E1S150	8014	1 1/2"	20
E1S200	8015	2"	10



EMT 2 hole Strap

Product Code	SKU Code	Size	Box Qty
E2S050	8020	1/2"	100
E2S075	8021	3/4"	50
E2S100	8022	1"	25
E2S125	8023	1 1/4"	25
E2S150	8024	1 1/2"	10
E2S200	8025	2"	50



EMT Nail Strap

Product Code	SKU Code	Size	Box Qty
ENS050	8899	1/2"	100
ENS075	8900	3/4"	100
ENS100	8901	1"	100



Rigid 1 Hole Strap

Product Code	SKU Code	Size	Box Qty
R1S025	8031	1/4"	100



Rigid 1 Hole Strap

Product Code	SKU Code	Size	Box Qty
R1S050	8032	1/2"	100
R1S075	8033	3/4"	50
R1S100	8034	1"	25
R1S125	8035	1 1/4"	25
R1S150	8036	1 1/2"	20
R1S200	8037	2"	10
R1S250	8038	2 1/2"	50
R1S300	8039	3"	50
R1S400	8041	4"	25



Rigid 2 Hole Strap

Product Code	SKU Code	Size	Box Qty
R2S050	8042	1/2"	100
R2S075	8043	3/4"	50
R2S100	8044	1"	25
R2S125	8045	1 1/4"	20
R2S150	8046	1 1/2"	10
R2S200	8047	2"	50
R2S250	8048	2 1/2"	50
R2S300	8049	3"	50
R2S400	8051	4"	25



BX / MC 1 Hole Cable Strap

Product Code	SKU Code	Size	Box Qty
F1S038	8030	3/8"	100



Universal Hanger

Product Code	SKU Code	Size	Box Qty
UH050	8000	1/2"	100
UH075	8001	3/4"	100
UH100	8002	1"	100
UH125	8003	1 1/4"	100
UH150	8004	1 1/2"	100
UH200	8005	2"	50
UH250	8006	2 1/2"	50
UH300	8007	3"	25
UH400	8009	4"	25



Kick Plate

Product Code	SKU Code	Size		Description	Box Qty
		L	W		
KPR 16G	8896	2.5	1.5	Regular - 16 Gauge	100
KPL 16G	8897	5	1.5	Large - 16 Gauge	100



Jack Chain

Product Code	SKU Code	Size	Length - ft
10JC-R	8508	#10	100ft Reel
12JC-R	8509	#12	100ft Reel



10 med base sockets

Light String - 10 Sockets & Plastic Covers

Product Code	SKU Code	Length - ft	Wattage	AMP/ Volt	Box Qty
TLS14/2-100	8507	100ft	150W MAX	13A / 125V	1



Straight Application Cord - 125V

Product Code	SKU Code	Length - ft	Wattage	AMP	Box Qty
APC14/3-6ST	8502	6FT	1875W	15A	50
APC14/3-9ST	8503	9FT	1875W	15A	50
APC16/3-3ST	8504	3FT	1625W	13A	50
APC16/3-6ST	8505	6FT	1625W	13A	50
APC16/3-9ST	8506	9FT	1625W	13A	50



Angled Application Cord - 125V

Product Code	SKU Code	Length - ft	Wattage	AMP	Box Qty
APC14/3-6AN	8500	6FT	1875W	15A	50
APC16/3-6AN	8501	6FT	1625W	13A	50



Motor Control Gear



The Global Motor Control range of products has been assembled, sourcing only products of the highest quality available. Feature packed, reliable, ease of use and value for money are only some of the reasons each individual product line was selected to become part of the Global offering.

The range will appeal to OEM's, End users and Contractors alike, filling a gap in the market between the traditional electrical wholesaler offerings and popular internet sites. Providing local availability and affordability without reducing the quality or life expectancy being promoted by the larger players in the market.

Contactors, Overloads, Push buttons, DIN rail, Stack lights, Non-metallic enclosures, Timers, Lighting controls, Cable glands, Wire duct, Motor starters and Disconnects are amongst the products we currently offer in phase I of the product roll out.

If you are an OEM or end user, please feel free to contact us if you have any questions about our range of products, If you are an electrical wholesaler, please contact us today to see how you can become a participant in the growing network of Electrical wholesaling "Global motor control team"





Polycarbonate Enclosures

Product Code	SKU Code	Description	Size	NEMA / IP Rating
H6064HLL	8863	Hinged Opaque front cover	6" x 6" x 4"	4X / 66
H6064HCLL	8864	Hinged Clear front cover	6" x 6" x 4"	4X / 66
ABP66	8879	Aluminum Back Panel	6" x 6"	4X / 66
H8084HLL	8865	Hinged Opaque front cover	8" x 8" x 4"	4X / 66
H8084HCLL	8866	Hinged Clear front cover	8" x 8" x 4"	4X / 66
ABP88	8880	Aluminum Back Panel	8" x 8"	4X / 66
H10084HLL	8867	Hinged Opaque front cover	10" x 8" x 4"	4X / 66
H10084HCLL	8868	Hinged Clear front cover	10" x 8" x 4"	4X / 66
H10086HLL	8869	Hinged Opaque front cover	10" x 8" x 6"	4X / 66
H10086HCLL	8870	Hinged Clear front cover	10" x 8" x 6"	4X / 66
ABP108	8881	Aluminum Back Panel	10" x 8"	4X / 66
H12106HLL	8871	Hinged Opaque front cover	12" x 10" x 6"	4X / 66
H12106HCLL	8872	Hinged Clear front cover	12" x 10" x 6"	4X / 66
ABP1210	8882	Aluminum Back Panel	12" x 10"	4X / 66
H141206HLL	8873	Hinged Opaque front cover	14" x 12" x 6"	4X / 66
H141206HCLL	8874	Hinged Clear front cover	14" x 12" x 6"	4X / 66
ABP1412	8883	Aluminum Back Panel	14" x 12"	4X / 66
ABP-1412SP/SOPK	8886	Aluminum Swing Panel Kit	14" x 12"	4X / 66
H161407HLL	8875	Hinged Opaque front cover	16" x 14" x 7"	4X / 66
H161407HCLL	8876	Hinged Clear front cover	16" x 14" x 7"	4X / 66
ABP1614	8884	Aluminum Back Panel	16" x 14"	4X / 66
ABP-1614SP/SOPK	8887	Aluminum Swing Panel Kit	16" x 14"	4X / 66
H181610HLL	8877	Hinged Opaque front cover	18" x 16" x 10"	4X / 66
H181610HCLL	8878	Hinged Clear front cover	18" x 16" x 10"	4X / 66
ABP1816	8885	Aluminum Back Panel	18" x 16"	4X / 66
ABP-1816SP/SOPK	8888	Aluminum Swing Panel Kit	18" x 16"	4X / 66
G242410-P560	8892	Hinged Opaque front cover	24" x 24" x 10"	4X / 66
ABP2424	8893	Aluminum Back Panel	24" x 24"	4X / 66
ABP2424 GSOPK	8894	Aluminum Swing Panel Kit	24" x 24"	4X / 66
GSR2424	8895	Stiffener Ring	24" x 24"	4X / 66

Enclosure Accessories

Product Code	SKU Code	Description
VENT2	8889	Vent Filter Kit
FS KIT-2	8890	Fan Shroud Kit
BPAKG	8891	Back Panel Height Adjustment Kit



IEC Contactors & Coils 9AMP - 95AMP

Product Code	SKU Code	Description	Auxiliary Contacts		NEMA equivalent size	Contact Rating (A)		Coil Voltage V	Inrush VA	Sealed VA
			NO	NC		Inductive	Resistive			
GC0911B7	8599	9 Amp Contactor 24VAC coil	1	1	00	9	25	24	70	7.5
GC0911G7	8600	9 Amp Contactor 120VAC coil	1	1	00	9	25	120	70	7.5
GC0911U7	8601	9 Amp Contactor 240VAC coil	1	1	00	9	25	240	70	7.5
GC0911T7	8602	9 Amp Contactor 480VAC coil	1	1	00	9	25	480	70	7.5
GC1211B7	8603	12 Amp Contactor 24VAC coil	1	1	-	12	25	24	70	7.5
GC1211G7	8604	12 Amp Contactor 120VAC coil	1	1	-	12	25	120	70	7.5
GC1211U7	8605	12 Amp Contactor 240VAC coil	1	1	-	12	25	240	70	7.5
GC1211T7	8606	12 Amp Contactor 480VAC coil	1	1	-	12	25	480	70	7.5
GC1811B7	8607	18 Amp Contactor 24VAC coil	1	1	0	18	32	24	70	7.5
GC1811G7	8608	18 Amp Contactor 120VAC coil	1	1	0	18	32	120	70	7.5
GC1811U7	8609	18 Amp Contactor 240VAC coil	1	1	0	18	32	240	70	7.5
GC1811T7	8610	18 Amp Contactor 480VAC coil	1	1	0	18	32	480	70	7.5
GC2511B7	8611	25 Amp Contactor 24VAC coil	1	1	-	25	45	24	70	7.5
GC2511G7	8612	25 Amp Contactor 120VAC coil	1	1	-	25	45	120	70	7.5
GC2511U7	8613	25 Amp Contactor 240VAC coil	1	1	-	25	45	240	70	7.5
GC2511T7	8614	25 Amp Contactor 480VAC coil	1	1	-	25	45	480	70	7.5
GC3211B7	8615	32 Amp Contactor 24VAC coil	1	1	1	32	50	24	220	26
GC3211G7	8616	32 Amp Contactor 120VAC coil	1	1	1	32	50	120	220	26
GC3211U7	8617	32 Amp Contactor 240VAC coil	1	1	1	32	50	240	220	26
GC3211T7	8618	32 Amp Contactor 480VAC coil	1	1	1	32	50	480	220	26
GC3811B7	8619	38 Amp Contactor 24VAC coil	1	1	-	38	50	24	220	26
GC3811G7	8620	38 Amp Contactor 120VAC coil	1	1	-	38	50	120	220	26
GC3811U7	8621	38 Amp Contactor 240VAC coil	1	1	-	38	50	240	220	26
GC3811T7	8622	38 Amp Contactor 480VAC coil	1	1	-	38	50	480	220	26
GC5011B7	8623	50 Amp Contactor 24VAC coil	1	1	2	50	80	24	220	26
GC5011G7	8624	50 Amp Contactor 120VAC coil	1	1	2	50	80	120	220	26
GC5011U7	8625	50 Amp Contactor 240VAC coil	1	1	2	50	80	240	220	26
GC5011T7	8626	50 Amp Contactor 480VAC coil	1	1	2	50	80	480	220	26
GC6511B7	8627	65 Amp Contactor 24VAC coil	1	1	-	65	80	24	220	26
GC6511G7	8628	65 Amp Contactor 120VAC coil	1	1	-	65	80	120	220	26
GC6511U7	8629	65 Amp Contactor 240VAC coil	1	1	-	65	80	240	220	26
GC6511T7	8630	65 Amp Contactor 480VAC coil	1	1	-	65	80	480	220	26
GC8011B7	8631	80 Amp Contactor 24VAC coil	1	1	-	80	125	24	220	26
GC8011G7	8632	80 Amp Contactor 120VAC coil	1	1	-	80	125	120	220	26
GC8011U7	8633	80 Amp Contactor 240VAC coil	1	1	-	80	125	240	220	26
GC8011T7	8634	80 Amp Contactor 480VAC coil	1	1	-	80	125	480	220	26
GC9511B7	8635	95 Amp Contactor 24VAC coil	1	1	3	95	125	24	220	26
GC9511G7	8636	95 Amp Contactor 120VAC coil	1	1	3	95	125	120	220	26
GC9511U7	8637	95 Amp Contactor 240VAC coil	1	1	3	95	125	240	220	26
GC9511T7	8638	95 Amp Contactor 480VAC coil	1	1	3	95	125	480	220	26



IEC Contactors 115AMP - 150AMP

Product Code	SKU Code	Description	NEMA equivalent size	Contact Rating (A)		Coil Inrush VA	Sealed VA
				Inductive	Resistive		
GC3115	8639	115 Amp AC Contactor (no coil)	-	115	200	-	-
GC3150	8640	150 Amp AC Contactor (no coil)	4	150	250	-	-
GCOFF24	8696	COIL 24VAC, FOR 115A-150A	-	-	-	660	55
GCOFF120	8697	COIL 120VAC, FOR 115A-150A	-	-	-	660	55
GCOFF240	8698	COIL 240VAC, FOR 115A-150A	-	-	-	660	55
GCOFF480	8699	COIL 480VAC, FOR 115A-150A	-	-	-	660	55

IEC Contactors 185AMP - 225AMP

Product Code	SKU Code	Description	NEMA equivalent size	Contact Rating (A)		Coil Inrush VA	Sealed VA
				Inductive	Resistive		
GC3185	8641	185 Amp AC Contactor (no coil)	-	185	275	-	-
GC3225	8642	225 Amp AC Contactor (no coil)	-	225	315	-	-
GCOFG24	8700	COIL 24VAC, FOR 185A-225A	-	-	-	805	66
GCOFG120	8701	COIL 120VAC, FOR 185A-225A	-	-	-	805	66
GCOFG240	8702	COIL 240VAC, FOR 185A-225A	-	-	-	805	66
GCOFG480	8703	COIL 480VAC, FOR 185A-225A	-	-	-	805	66

IEC Contactors 265AMP - 330AMP

Product Code	SKU Code	Description	NEMA equivalent size	Contact Rating (A)		Coil Inrush VA	Sealed VA
				Inductive	Resistive		
GC3265	8643	265 Amp AC Contactor (no coil)	-	265	350	-	-
GC3330	8644	330 Amp AC Contactor (no coil)	5	330	400	-	-
GCOFH24	8704	COIL 24VAC, FOR 265A-330A	-	-	-	700	10
GCOFH120	8705	COIL 120VAC, FOR 265A-330A	-	-	-	700	10
GCOFH240	8706	COIL 240VAC, FOR 265A-330A	-	-	-	700	10
GCOFH480	8707	COIL 480VAC, FOR 265A-330A	-	-	-	700	10

IEC Contactors 400AMP

Product Code	SKU Code	Description	NEMA equivalent size	Contact Rating (A)		Coil Inrush VA	Sealed VA
				Inductive	Resistive		
GC3400	8645	400 Amp AC Contactor (no coil)	-	400	500	-	-
GCOFJ24	8708	COIL 24VAC, FOR 400A	-	-	-	1075	15
GCOFJ120	8709	COIL 120VAC, FOR 400A	-	-	-	1075	15
GCOFJ240	8710	COIL 240VAC, FOR 400A	-	-	-	1075	15
GCOFJ480	8711	COIL 480VAC, FOR 400A	-	-	-	1075	15



Top & Side Mount Auxiliaries Contacts

Product Code	SKU Code	Description
GAC11	8772	Top Mount Aux 1NO + 1NC for all size contactors
GAC22	8773	Top Mount Aux 2NO + 2NC for all size contactors
GAC20	8774	Top Mount Aux 2NO for all size contactors
GAS11	8775	Side Mount Aux 1NO + 1NC for contactors 9 - 32 amps
GAS20	8776	Side Mount Aux 2NO for contactors 9 - 32 amps



Mechanical Interlocks

Product Code	SKU Code	Description
GMC0932	8762	Mechanical Interlock for 9 - 32 amp contactors
GMC4065	8764	Mechanical Interlock for 40 - 65 amp contactors
GMC8095	8763	Mechanical Interlock for 80 - 95 amp contactors
GMC115150	8765	Mechanical Interlock for 115 - 150 amp contactors
GMC185225	8766	Mechanical Interlock for 185 - 225 amp contactors
GMC265400	8767	Mechanical Interlock for 265 - 400 amp contactors



Reversing Sets

Product Code	SKU Code	AMP	Description
GRL0912	8777	9 - 12	Reversing Wire set
GRL18	8778	18	Reversing Wire set
GRL25	8779	25	Reversing Wire set
GRL32	8780	32	Reversing Wire set
GRL65	8781	40 - 65	Reversing Wire set
GRL90	8782	80 - 90	Reversing Wire set
GRL115	8785	115	Reversing Busbars
GRL150	8783	150	Reversing Busbars
GRL185	8786	185	Reversing Busbars
GRL225	8784	225	Reversing Busbars
GRL 265	8787	265	Reversing Busbars



Protective Shroud & Coil Suppressor

Product Code	SKU Code	Description
GPS115	8769	Protective Shroud Set for 115 amp contactor
GPS150185	8770	Protective Shroud Set for 150 - 185 amp contactor
GPS225400	8771	Protective Shroud Set for 225 - 400 amp contactor
GCS95	8768	Coil Suppressor for contactors up to 95 amps



Thermal Overloads

Product Code	SKU Code	AMP	Maximum Horsepower			
			1 Phase at 115 VAC	1 Phase at 230 VAC	3 Phase at 230 VAC	3 Phase at 460 VAC
GT09301	8730	0.10 - 0.16	-	-	-	-
GT09302	8731	0.16 - 0.25	-	-	-	-
GT09303	8732	0.25 - 0.40	-	-	-	-
GT09304	8733	0.40 - 0.63	-	-	-	-
GT09305	8734	0.63 - 1.00	-	-	-	-
GT09306	8735	1.00 - 1.60	-	-	-	3/4
GT09307	8736	1.60 - 2.50	-	1/6	1/2	1
GT09308	8737	2.50 - 4.00	-	1/3	1	2
GT09310	8738	4.00 - 6.00	1/6	1/2	1 1/2	3
GT09312	8739	5.50 - 8.00	1/4	3/4	2	-
GT09314	8740	7.00 - 10.0	1/3	1	-	5
GT12316	8741	9.00 - 13.00	1/2	1 1/2	3	7 1/2
GT18321	8742	12.00 - 18.00	1	2	-	10
GT25322	8743	17.00 - 25.00	1 1/2	3	7 1/2	15
GT32353	8744	23.0 - 32.0	2	5	10	20
GT32355	8745	28.0 - 36.0	-	-	-	-
GT40355	8746	30.0 - 40.0	2	5	10	2-
GT65357	8747	37.0 - 50.0	-	7 1/2	15	30
GT65359	8748	48.0 - 65.0	5	10	20	40
GT65361	8749	55.0 - 70.0	-	-	25	50
GT80363	8750	63.0 - 80.0	-	-	-	60
GT95365	8751	80.0 - 93.0	7 1/2	-	30	-
GT105	8752	65 - 105	10	-	40	75
GT125	8753	80 - 125	-	-	-	-
GT160	8754	100 - 160	-	-	50	100
GT200	8755	125 - 200	-	-	75	125
GT250	8756	160 - 250	-	-	100	150
GT315	8757	200 - 315	-	-	125	200
GT400	8758	250 - 400	-	-	150	250

Thermal Overloads Accessories

Product Code	SKU Code	Description
GTA0964	8759	Mounting base for Overloads up to GT18321
GTA3264	8760	Mounting base for Overloads from GT25322-GT32355
GTA0464	8761	Mounting base for Overloads from GT40355-GT95365

*Protective shroud (6 per set) for IP20 protection on overload sizes.
 SKU 8770 (Page40) also fits overloads GT105 through GT200
 SKU 8771 (Page40) also fits overloads GT250 through GT400



1 Pole Definite Purpose Contactors							
Product Code	SKU Code	Terminal Type	Contact Rating (A)		Coil Voltage V	Inrush VA	Sealed VA
			Inductive	Resistive			
GDP201B6	8648	Screw type with spade terminal	20	30	24	65	7.5
GDP201G6	8649	Screw type with spade terminal	20	30	120	65	7.5
GDP201U6	8650	Screw type with spade terminal	20	30	240	65	7.5
GDP201T6	8651	Screw type with spade terminal	20	30	480	65	7.5
GDP301B6	8652	Screw type with spade terminal	30	40	24	65	7.5
GDP301G6	8653	Screw type with spade terminal	30	40	120	65	7.5
GDP301U6	8654	Screw type with spade terminal	30	40	240	65	7.5
GDP301T6	8655	Screw type with spade terminal	30	40	480	65	7.5
GDP401B6	8656	Box lug type	40	50	24	65	7.5
GDP401G6	8657	Box lug type	40	50	120	65	7.5
GDP401U6	8658	Box lug type	40	50	240	65	7.5
GDP401T6	8659	Box lug type	40	50	480	65	7.5



1 Pole Definite Purpose Contactors + shnt							
Product Code	SKU Code	Terminal Type	Contact Rating (A)		Coil Voltage V	Inrush VA	Sealed VA
			Inductive	Resistive			
GDP251SB6	8660	Screw type with spade terminal	25	30	24	65	7.5
GDP251SG6	8661	Screw type with spade terminal	25	30	120	65	7.5
GDP251SU6	8662	Screw type with spade terminal	25	30	240	65	7.5
GDP251ST6	8663	Screw type with spade terminal	25	30	480	65	7.5
GDP301SB6	8664	Screw type with spade terminal	30	40	24	65	7.5
GDP301SG6	8665	Screw type with spade terminal	30	40	120	65	7.5
GDP301SU6	8666	Screw type with spade terminal	30	40	240	65	7.5
GDP301ST6	8667	Screw type with spade terminal	30	40	480	65	7.5
GDP401SB6	8668	Box lug type	40	50	24	65	7.5
GDP401SG6	8669	Box lug type	40	50	120	65	7.5
GDP401SU6	8670	Box lug type	40	50	240	65	7.5
GDP401ST6	8671	Box lug type	40	50	480	65	7.5



2 Pole Definite Purpose Contactors

Product Code	SKU Code	Terminal Type	Contact Rating (A)		Coil Voltage V	Inrush VA	Sealed VA
			Inductive	Resistive			
GDP202B6	8672	Screw type with spade terminal	20	30	24	65	7.5
GDP202G6	8673	Screw type with spade terminal	20	30	120	65	7.5
GDP202U6	8674	Screw type with spade terminal	20	30	240	65	7.5
GDP202T6	8675	Screw type with spade terminal	20	30	480	65	7.5
GDP302B6	8676	Screw type with spade terminal	30	40	24	65	7.5
GDP302G6	8677	Screw type with spade terminal	30	40	120	65	7.5
GDP302U6	8678	Screw type with spade terminal	30	40	240	65	7.5
GDP302T6	8679	Screw type with spade terminal	30	40	480	65	7.5
GDP402B6	8680	Box lug type	40	50	24	65	7.5
GDP402G6	8681	Box lug type	40	50	120	65	7.5
GDP402U6	8682	Box lug type	40	50	240	65	7.5
GDP402T6	8683	Box lug type	40	50	480	65	7.5



3 Pole Definite Purpose Contactors

Product Code	SKU Code	Terminal Type	Contact Rating (A)		Coil Voltage V	Inrush VA	Sealed VA
			Inductive	Resistive			
GDP253B6	8684	Screw type with spade terminal	25	30	24	65	7.5
GDP253G6	8685	Screw type with spade terminal	25	30	120	65	7.5
GDP253U6	8686	Screw type with spade terminal	25	30	240	65	7.5
GDP253T6	8687	Screw type with spade terminal	25	30	480	65	7.5
GDP303B6	8688	Screw type with spade terminal	30	40	24	65	7.5
GDP303G6	8689	Screw type with spade terminal	30	40	120	65	7.5
GDP303U6	8690	Screw type with spade terminal	30	40	240	65	7.5
GDP303T6	8691	Screw type with spade terminal	30	40	480	65	7.5
GDP403B6	8692	Box lug type	40	50	24	65	7.5
GDP403G6	8693	Box lug type	40	50	120	65	7.5
GDP403U6	8694	Box lug type	40	50	240	65	7.5
GDP403T6	8695	Box lug type	40	50	480	65	7.5



Manual Motor Starters						
Product Code	SKU Code	AMP	Maximum Horsepower			
			1 Phase at 115 VAC	1 Phase at 230 VAC	3 Phase at 230 VAC	3 Phase at 460 VAC
GMM0.16	8787	0.01 - 0.16	-	-	-	-
GMM0.25	8788	0.16 - 0.25	-	-	-	-
GMM0.4	8789	0.25 - 0.4	-	-	-	-
GMM0.63	8790	0.41 - 0.63	-	-	-	-
GMM1.0	8791	0.63 - 1.0	-	-	-	-
GMM1.6	8792	1.0 - 1.6	-	-	-	3/4
GMM2.5	8793	1.6 - 2.5	-	1/6	1/2	1
GMM4	8794	2.5 - 4	-	1/3	3/4	2
GMM6.3	8795	4 - 6.3	1/4	1/2	1 1/2	3
GMM10	8796	6.3 - 10	1/2	1	3	5
GMM14	8797	10 - 14	3/4	1 1/2	-	7 1/2
GMM18	8798	14 - 18	1	2	5	10
GMM23	8799	18 - 23	1 1/2	3	7 1/2	15
GMM27	8800	23 - 27	2	-	-	-
GMM32	8801	27 - 32	-	5	10	20



Polycarbonate enclosures for MMS		
Product Code	SKU Code	Description
GMMFP	8802	Polycarbonate enclosure with clear silicon membrane made to enclose the Manual motor Starters Flush mount
GMMHP	8803	Polycarbonate enclosure with clear silicon membrane made to enclose the Manual motor Starters Surface Mount
GMEAT	8804	Mushroom Head stop button for use with GMMFP & GMMHP



Auxiliary Contacts, Under-Voltage and Shunt Release for MMS		
Product Code	SKU Code	Description
GMMAC10	8805	Side Mount Auxiliary Contact 1NO
GMMAC20	8806	Side Mount Auxiliary Contact 2NO
GMMAC11	8807	Side Mount Auxiliary Contact 1NO + 1NC
GMMACV10	8808	Front Mount Auxiliary Contact 1NO
GMMACV01	8809	Front Mount Auxiliary Contact 1NC
GMMAR24	8810	Shunt Release 24VAC
GMMAR110	8811	Shunt Release 110VAC
GMMAR220	8812	Shunt Release 220VAC
GMMUR24	8813	Under Voltage Release 24VAC
GMMUR110	8814	Under Voltage Release 120VAC
GMMUR220	8815	Under Voltage Release 220VAC



Enclosed Metal Motor Starter Direct on Line

Product Code	SKU Code	Description	NEMA equivalent size	Maximum Horsepower			
				1 Phase at 115 VAC	1 Phase at 240 VAC	3 Phase at 230 VAC	3 Phase at 460 VAC
GMS0936G6	8712	Max FLA 9AMPS 120VAC Control	00	1/3	1	2	5
GMS0936U6	8713	Max FLA 9AMPS 240VAC Control	00	1/3	1	2	5
GMS0936T6	8714	Max FLA 9AMPS 480VAC Control	00	1/3	1	2	5
GMS1836G6	8715	Max FLA 18AMPS 120VAC Control	0	1	3	5	10
GMS1836U6	8716	Max FLA 18AMPS 240VAC Control	0	1	3	5	10
GMS1836T6	8717	Max FLA 18AMPS 480VAC Control	0	1	3	5	10
GMS3236G6	8718	Max FLA 32AMPS 120VAC Control	1	2	5	10	20
GMS3236U6	8719	Max FLA 32AMPS 240VAC Control	1	2	5	10	20
GMS3236T6	8720	Max FLA 32AMPS 480VAC Control	1	2	5	10	20
GMS5036G6	8721	Max FLA 50AMPS 120VAC Control	2	3	7.5	20	40
GMS5036U6	8722	Max FLA 50AMPS 240VAC Control	2	3	7.5	20	40
GMS5036T6	8723	Max FLA 50AMPS 480VAC Control	2	3	7.5	20	40
GMS8036G6	8724	Max FLA 80AMPS 120VAC Control	-	7.5	15	25	60
GMS8036U6	8725	Max FLA 80AMPS 240VAC Control	-	7.5	15	25	60
GMS8036T6	8726	Max FLA 80AMPS 480VAC Control	-	7.5	15	25	60

* Supplied ready wired to accept overload and quick kits (sold separately)



Quick Kits for Enclosed Metal Starters

Product Code	SKU Code	Description
GMSC6	8727	Quick Kit On / Off Selector Switch
GMSC	8728	Quick Kit Hand / Off / Auto Selector Switch
GMSA2	8729	Quick Kit On / Off Push Buttons



Astronomical Timer

Product Code	SKU Code	Description
GAT1	8858	Astronomical 24 / 7 timer 110V – 240VAC with 2 x relay output (NO) rated at 8A resistive at 240V
GDDT6	8859	Astro Software
GUSB	8860	USB Interface Cable
GMC	8861	Astro Memory Card



24 Hour Timer

Product Code	SKU Code	Description
GCT1	8857	Daily/ Weekly 24/7 Timer 110V – 240VAC with 1 x changeover relay output rated at 3A resistive at 120V



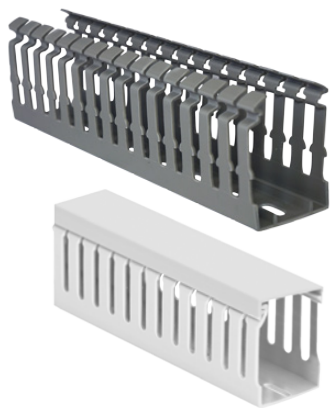
Multi function / Multi Voltage

Product Code	SKU Code	Description
GMFT181	8855	Multi function, multi voltage digital timer. 18 programmable functions 24VAC/DC – 240VAC/DC self-sensing. Output relay changeover rated at 3A resistive at 120V
GMFT182	8856	Multi function, multi voltage digital timer. 18 programmable functions 24VAC/DC – 240VAC/DC self-sensing. Output relay 2 NO rated at 3A resistive at 120V



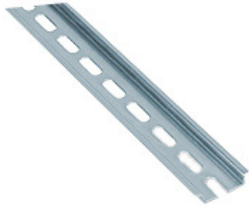
Under / Over Voltage Relay

Product Code	SKU Code	Description
GVMR1	8862	Three phase monitoring relay 208 – 480VAC. Phase loss < 100ms, Under voltage -2 to -20%, Over Voltage +2 to +20%



Wire Duct C/W cover (2 meter / 6'6" lengths)

Product Code	SKU Code	Description (h x w)	Color
G2540G	8540	Narrow fingered wire duct complete with cover (1" x 1.25")	Gray
G2540W	8541	Narrow fingered wire duct complete with cover (1" x 1.25")	White
G2560G	8542	Narrow fingered wire duct complete with cover (1" x 1.5")	Gray
G2560W	8543	Narrow fingered wire duct complete with cover (1" x 1.5")	White
G2580G	8544	Narrow fingered wire duct complete with cover (1" x 2.25")	Gray
G2580W	8545	Narrow fingered wire duct complete with cover (1" x 2.25")	White
G4040G	8546	Narrow fingered wire duct complete with cover (1.5" x 1.5")	Gray
G4040W	8547	Narrow fingered wire duct complete with cover (1.5" x 1.5")	White
G4060G	8548	Narrow fingered wire duct complete with cover (1.5" x 2.25")	Gray
G4060W	8549	Narrow fingered wire duct complete with cover (1.5" x 2.25")	White
G4080G	8550	Narrow fingered wire duct complete with cover (1.5" x 3")	Gray
G4080W	8551	Narrow fingered wire duct complete with cover (1.5" x 3")	White
G40100G	8552	Narrow fingered wire duct complete with cover (1.5" x 4")	Gray
G40100W	8553	Narrow fingered wire duct complete with cover (1.5" x 4")	White
G6040G	8554	Narrow fingered wire duct complete with cover (2.25" x 1.5")	Gray
G6040W	8555	Narrow fingered wire duct complete with cover (2.25" x 1.5")	White
G6060G	8556	Narrow fingered wire duct complete with cover (2.25" x 2.25")	Gray
G6060W	8557	Narrow fingered wire duct complete with cover (2.25" x 2.25")	White
G6080G	8558	Narrow fingered wire duct complete with cover (2.25" x 3")	Gray
G6080W	8559	Narrow fingered wire duct complete with cover (2.25" x 3")	White
G60100G	8560	Narrow fingered wire duct complete with cover (2.25" x 4")	Gray
G60100W	8561	Narrow fingered wire duct complete with cover (2.25" x 4")	White
G8040G	8562	Narrow fingered wire duct complete with cover (3" x 1.25")	Gray
G8040W	8563	Narrow fingered wire duct complete with cover (3" x 1.25")	White
G8060G	8564	Narrow fingered wire duct complete with cover (3" x 2.25")	Gray
G8060W	8565	Narrow fingered wire duct complete with cover (3" x 2.25")	White
G8080G	8566	Narrow fingered wire duct complete with cover (3" x 3")	Gray
G8080W	8567	Narrow fingered wire duct complete with cover (3" x 3")	White
G80100G	8568	Narrow fingered wire duct complete with cover (3" x 4")	Gray
G80100W	8569	Narrow fingered wire duct complete with cover (3" x 4")	White
G10060G	8570	Narrow fingered wire duct complete with cover (4" x 1.25")	Gray
G10060W	8571	Narrow fingered wire duct complete with cover (4" x 1.25")	White
G10080G	8572	Narrow fingered wire duct complete with cover (4" x 3")	Gray
G10080W	8573	Narrow fingered wire duct complete with cover (4" x 3")	White
G100100G	8574	Narrow fingered wire duct complete with cover (4" x 4")	Gray
G100100W	8575	Narrow fingered wire duct complete with cover (4" x 4")	White
BWRT60	8578	Wire Retainer - One size fits all sizes of duct	-



Steel slotted DIN rail

Product Code	SKU Code	Length
536L0	6064	1 meter
536L02	6063	2 meter



Aluminum slotted DIN rail

Product Code	SKU Code	Length
DINRAILA1	6067	1 meter
DINRAILA2	6068	2 meter



3 pole Disconnect switch in NEMA 4X Enclosure

Product Code	SKU Code	AMP	Main Pole <small>Add-on</small>	Neutral <small>Add-on</small>	Auxiliary <small>Add-on</small>
GED32	8515	32	GMP32	GNP32	GAP32
GED63	8516	63	GMP63	GNP63	GAP63
GED125	8517	125	GMP125	GNP125	GAP125



3 pole Disconnect switch, panel mount with round padlockable handle

Product Code	SKU Code	AMP	Main Pole <small>Add-on</small>	Neutral <small>Add-on</small>	Auxiliary <small>Add-on</small>
G203RD	8518	20	GMP20	GNP20	GAP20
G323RD	8519	32	GMP32	GNP32	GAP32
G633RD	8520	63	GMP63	GNP63	GAP63
G1003RD	8521	100	GMP125	GNP125	GAP125
G1253RD	8522	125	GMP125	GNP125	GAP125



3 pole Disconnect switch, panel mount with padlockable pistol grip handle

Product Code	SKU Code	AMP	Main Pole <small>Add-on</small>	Neutral <small>Add-on</small>	Auxiliary <small>Add-on</small>
G323SH	8524	32	GMP32	GNP32	GAP32
G633SH	8525	63	GMP63	GNP63	GAP63
G1003SH	8526	100	GMP125	GNP125	GAP125
G1253SH	8527	125	GMP125	GNP125	GAP125

Accessories for Disconnects (up to 2 per switch)

Product Code	SKU Code	Description
GMP20	8528	Add on - Main pole 20amp
GMP32	8529	Add on - Main pole 32amp
GMP63	8530	Add on - Main pole 63amp
GMP125	8531	Add on - Main pole 100-125amp
GNP20	8532	Add on - Neutral 20amp
GNP32	8533	Add on - switched Neutral (late make, early break) 32amp
GNP63	8534	Add on - switched Neutral (late make, early break) 63amp
GNP125	8535	Add on - switched Neutral (late make, early break) 100-125amp
GAP20	8536	Add on - Auxiliary 1NO&NC 16-20amp
GAP32	8537	Add on - Auxiliary 1NO&NC 25-32amp
GAP63	8538	Add on - Auxiliary 1NO&NC 40-60amp
GAP125	8539	Add on - Auxiliary 1NO&NC 100-125amp



Nylon Cable Glands C/W lock nuts

Product Code	SKU Code	Color	Thread Dia	Cable Diameter					Box Qty
				min	mm	max	min	in	
GCG38G	8585	Gray	3/8" NPT	4	8	0.2	0.3	100	
GCG38B	8586	Black	3/8" NPT	4	8	0.2	0.3	100	
GCG12G	8587	Gray	1/2" NPT	6	12	0.2	0.5	100	
GCG12B	8588	Black	1/2" NPT	6	12	0.2	0.5	100	
GCG12EG	8589	Gray	1/2" NPT	10	14	0.4	0.6	100	
GCG312EB	8590	Black	1/2" NPT	10	14	0.4	0.6	100	
GCG34G	8591	Gray	3/4" NPT	13	18	0.5	0.7	100	
GCG34B	8592	Black	3/4" NPT	13	18	0.5	0.7	100	
GCG10G	8593	Gray	1" NPT	13	20	0.5	0.8	50	
GCG10B	8594	Black	1" NPT	13	20	0.5	0.8	50	
GCG114G	8595	Gray	1 1/4" NPT	13	20	0.5	0.8	50	
GCG114B	8596	Black	1 1/4" NPT	13	20	0.5	0.8	50	
GCG112G	8597	Gray	1 1/2" NPT	20	26	0.8	1.0	20	
GCG112B	8598	Black	1 1/2" NPT	20	26	0.8	1.0	20	

* Inch dimensions have been rounded down to one decimal place from metric sizes.



Strain Relief Glands C/W lock nuts

Product Code	SKU Code	Color	Thread Dia	Cable Diameter					Box Qty
				min	mm	max	min	in	
GSR38B	8581	Black	3/8" NPT	4	8	0.2	0.3	100	
GSR12B	8582	Black	1/2" NPT	6	12	0.2	0.5	50	
GSR12EB	8583	Black	1/2" NPT	10	14	0.4	0.6	50	
GSR34B	8584	Black	3/4" NPT	13	18	0.5	0.7	50	

* Inch dimensions have been rounded down to one decimal place from metric sizes.



8817



8818

Tower Stack Lights baseholders & cap

Product Code	SKU Code	Description
G5001	8816	Short Base - Plastic Type
G5002	8817	Tall Base - Plastic Type
G122002	8818	Vertical Mount adapter kit
G12009	8820	Upper Cap



6070



6072

Tower Stack Lights base foldaways and wall mount

Product Code	SKU Code	Description
G60006	6070	Base foldaway 200mm AL Tube
G60010	6071	Base foldaway 400mm AL Tube
G70006	6072	Base Wall Mount 200mm AL Tube
G70014	6073	Base Wall Mount 600mm AL Tube
G70022	6074	Base Wall Mount 1000mm AL Tube



Tower Stack Lights Lens Module maximum of four modules per light

Product Code	SKU Code	VAC/DC	Color	Light
G50LA1U	8821	24	Amber	Continuous LED
G50LB1U	8822	24	Blue	Continuous LED
G50LG1U	8823	24	Green	Continuous LED
G50LR1U	8824	24	Red	Continuous LED
G50LW1U	8825	24	White	Continuous LED
G50LA2U	8826	24	Amber	Flashing LED
G50LB2U	8827	24	Blue	Flashing LED
G50LG2U	8828	24	Green	Flashing LED
G50LR2U	8829	24	Red	Flashing LED
G50LW2U	8830	24	White	Flashing LED
G50LA3U	8831	24	Amber	Rotary LED
G50LB3U	8832	24	Blue	Rotary LED
G50LG3U	8833	24	Green	Rotary LED
G50LR3U	8834	24	Red	Rotary LED
G50LW3U	8835	24	White	Rotary LED
G50LA1W	8836	120	Amber	Continuous LED
G50LB1W	8837	120	Blue	Continuous LED
G50LG1W	8838	120	Green	Continuous LED
G50LR1W	8839	120	Red	Continuous LED
G50LW1W	8840	120	White	Continuous LED
G50LA2W	8841	120	Amber	Flashing LED
G50LB2W	8842	120	Blue	Flashing LED
G50LG2W	8843	120	Green	Flashing LED
G50LR2W	8844	120	Red	Flashing LED
G50LW2W	8845	120	White	Flashing LED
G50LA3W	8846	120	Amber	Rotary LED
G50LB3W	8847	120	Blue	Rotary LED
G50LG3W	8848	120	Green	Rotary LED
G50LR3W	8849	120	Red	Rotary LED
G50LW3W	8850	120	White	Rotary LED

Tower Stack Lights Sound Module one only per stack

Product Code	SKU Code	VAC/DC	Color	Light
G50Z1U	8851	24	Black	Continuous 80DB
G50Z2U	8852	24	Black	Intermittent 80DB
G50Z1W	8853	110	Black	Continuous 80DB
G50Z2W	8854	110	Black	Intermittent 80DB



Nylon Flush Mounted Head Non-illuminated Push Button

Product Code	SKU Code	Color	Description	NEMA / IP Rating
GCP2BA1	6014	White	Flush Non-Illuminated Push Button	4X / 65
GCP2BA2	6015	Black	Flush Non-Illuminated Push Button	4X / 65
GCP2BA3	6016	Green	Flush Non-Illuminated Push Button	4X / 65
GCP2BA4	6017	Red	Flush Non-Illuminated Push Button	4X / 65
GCP2BA5	6018	Yellow	Flush Non-Illuminated Push Button	4X / 65
GCP2BA6	6019	Blue	Flush Non-Illuminated Push Button	4X / 65
GCP2BA334	6020	Black with White arrow	Flush Non-Illuminated Push Button	4X / 65
GCP2BA335	6021	White with Black arrow	Flush Non-Illuminated Push Button	4X / 65
GCS	8978	-	Clear Boot for BA Style Button	4X / 66



Nylon Projecting Head Push Button

Product Code	SKU Code	Color	Description	NEMA / IP Rating
GCP2BL1	6022	White	Projecting Non-Illuminated Push Button	4X / 65
GCP2BL2	6023	Black	Projecting Non-Illuminated Push Button	4X / 65
GCP2BL3	6024	Green	Projecting Non-Illuminated Push Button	4X / 65
GCP2BL4	6025	Red	Projecting Non-Illuminated Push Button	4X / 65
GCP2BL5	6026	Yellow	Projecting Non-Illuminated Push Button	4X / 65
GCP2BL6	6027	Blue	Projecting Non-Illuminated Push Button	4X / 65



Nylon Mushroom Head Push Button

Product Code	SKU Code	Color	Description	NEMA / IP Rating
GCP2BC2	6028	Black	Mushroom Head 40mm Momentary Push Button	4X / 65
GCP2BC4	6029	Red	Mushroom Head 40mm Momentary Push Button	4X / 65
GCP2BC5	6030	Yellow	Mushroom Head 40mm Momentary Push Button	4X / 65
GCP2BS44	6032	Red	Mushroom Head 30mm Twist to Release Push Button	4X / 65
GCP2BS54	6033	Red	Mushroom Head 40mm Twist to Release Push Button	4X / 65
GCP2BS64	6034	Red	Mushroom Head 60mm Twist to Release Push Button	4X / 65
GCP2BS14	6035	Red	Mushroom Head 40mm Key to Release Push Button	4X / 65



Nylon Two position Selector Switch

Product Code	SKU Code	Color	Description	NEMA / IP Rating
GCP2BD2	6037	Black	Maintained Short Handle	4X / 65
GCP2BJ2	6038	Black	Maintained Long Handle	4X / 65
GCP2BG2	6045	-	Maintained Key Operated - Key Removable in left position	4X / 65



Nylon Three position Selector Switch

Product Code	SKU Code	Color	Description	NEMA / IP Rating
GCP2BD3	6041	Black	Maintained Short Handle	4X / 65
GCP2BJ3	6042	Black	Maintained Long Handle	4X / 65
GCP2BDR3	6043	Black	Spring Return Short Handle	4X / 65
GCP2BJR3	6044	Black	Spring Return Long Handle	4X / 65
GCP2BG3	6046	Black	Maintained Key Operated - Key Removable in center position	4X / 65



Nylon Flush Illuminated Push Buttons

Product Code	SKU Code	Color	Description	NEMA / IP Rating
GPB2BWL31	6048	White	Flush Illuminated Push Button	4X / 65
GPB2BWL33	6049	Green	Flush Illuminated Push Button	4X / 65
GPB2BWL34	6050	Red	Flush Illuminated Push Button	4X / 65
GPB2BWL35	6051	Amber	Flush Illuminated Push Button	4X / 65
GPB2BWL36	6052	Blue	Flush Illuminated Push Button	4X / 65
GCL	8979	-	Clear Boot for Illuminated Push Buttons	4X / 66



LED Lamp Blocks for Flush Mount

Product Code	SKU Code	Color	Description	NEMA / IP Rating
GP2BWL71024	6053	White	LED Block for Nylon Push Button 24VAC/DC	1 / 20
GP2BWL73024	6054	Green	LED Block for Nylon Push Button 24VAC/DC	1 / 20
GP2BWL74024	6055	Red	LED Block for Nylon Push Button 24VAC/DC	1 / 20
GP2BWL75024	6056	Amber	LED Block for Nylon Push Button 24VAC/DC	1 / 20
GP2BWL76024	6057	Blue	LED Block for Nylon Push Button 24VAC/DC	1 / 20
GP2BWL71125	6058	White	LED Block for Nylon Push Button 120VAC	1 / 20
GP2BWL73125	6059	Green	LED Block for Nylon Push Button 120VAC	1 / 20
GP2BWL74125	6060	Red	LED Block for Nylon Push Button 120VAC	1 / 20
GP2BWL75125	6061	Amber	LED Block for Nylon Push Button 120VAC	1 / 20
GP2BWL76125	6062	Blue	LED Block for Nylon Push Button 120VAC	1 / 20



Nylon Contact Blocks

Product Code	SKU Code	Color	Description	NEMA / IP Rating
GB2BE101	8966	Green	1 N/O Contact	1 / 20
GB2BE102	8967	Red	1 N/C Contact	1 / 20

*Lamp block module will accept up to 4 contact blocks.



Chrome Flush Mounted Head Non-illuminated Push Button

Product Code	SKU Code	Color	Description	NEMA / IP Rating
GCB2BA1	8907	White	Flush Non-Illuminated Push Button	4X / 65
GCB2BA2	8908	Black	Flush Non-Illuminated Push Button	4X / 65
GCB2BA3	8909	Green	Flush Non-Illuminated Push Button	4X / 65
GCB2BA4	8910	Red	Flush Non-Illuminated Push Button	4X / 65
GCB2BA5	8911	Yellow	Flush Non-Illuminated Push Button	4X / 65
GCB2BA6	8912	Blue	Flush Non-Illuminated Push Button	4X / 65
GCB2BA334	8913	Black with White arrow	Flush Non-Illuminated Push Button	4X / 65
GCB2BA335	8914	White with Black arrow	Flush Non-Illuminated Push Button	4X / 65
GCS	8978	-	Clear Boot for BA Style Button	4X / 66



Chrome Projecting Head Push Button

Product Code	SKU Code	Color	Description	NEMA / IP Rating
GCB2BL1	8915	White	Projecting Non-Illuminated Push Button	4X / 65
GCB2BL2	8916	Black	Projecting Non-Illuminated Push Button	4X / 65
GCB2BL3	8917	Green	Projecting Non-Illuminated Push Button	4X / 65
GCB2BL4	8918	Red	Projecting Non-Illuminated Push Button	4X / 65
GCB2BL5	8919	Yellow	Projecting Non-Illuminated Push Button	4X / 65
GCB2BL6	8920	Blue	Projecting Non-Illuminated Push Button	4X / 65



Chrome Mushroom Head Push Button

Product Code	SKU Code	Color	Description	NEMA / IP Rating
GCB2BC2	8921	Black	Mushroom Head 40mm Momentary Push Button	4X / 65
GCB2BC4	8922	Red	Mushroom Head 40mm Momentary Push Button	4X / 65
GCB2BC5	8923	Yellow	Mushroom Head 40mm Momentary Push Button	4X / 65
GCB2BS44	8925	Red	Mushroom Head 30mm Twist to Release Push Button	4X / 65
GCB2BS54	8926	Red	Mushroom Head 40mm Twist to Release Push Button	4X / 65
GCB2BS64	8927	Red	Mushroom Head 60mm Twist to Release Push Button	4X / 65
GCB2BS14	8928	Red	Mushroom Head 40mm Key to Release Push Button	4X / 65
GCB2BT4	8929	Red	Mushroom Head 40mm Pull to Release Push Button	4X / 65



Chrome Two position Selector Switch

Product Code	SKU Code	Color	Description	NEMA / IP Rating
GCB2BD2	8930	Black	Maintained Short Handle	4X / 65
GCB2BJ2	8931	Black	Maintained Long Handle	4X / 65
GCB2BG2	8932	Black	Spring Return Short Handle	4X / 65
GCB2BJR2	8933	Black	Spring Return Long Handle	4X / 65
GCB2BG2	8938	-	Maintained Key Operated - Key Removable in left position	4X / 65



Chrome Three position Selector Switch

Product Code	SKU Code	Color	Description	NEMA / IP Rating
GCB2BD3	8934	Black	Maintained Short Handle	4X / 65
GCB2BJ3	8935	Black	Maintained Long Handle	4X / 65
GCB2BDR3	8936	Black	Spring Return Short Handle	4X / 65
GCB2BJR3	8937	Black	Spring Return Long Handle	4X / 65
GCB2BG3	8940	-	Maintained Key Operated - Key Removable in center position	4X / 65



LED Flush Mount Head Push Button

Product Code	SKU Code	Color	Description	NEMA / IP Rating
GCB2BWL31	8941	White	Flush Illuminated Push Button	4X / 65
GCB2BWL33	8942	Green	Flush Illuminated Push Button	4X / 65
GCB2BWL34	8943	Red	Flush Illuminated Push Button	4X / 65
GCB2BWL35	8944	Amber	Flush Illuminated Push Button	4X / 65
GCB2BWL36	8945	Blue	Flush Illuminated Push Button	4X / 65
GCL	8979	-	Clear Boot for Illuminated Push Buttons	4X / 66



LED Two Position Selector Switch

Product Code	SKU Code	Color	Description	NEMA / IP Rating
GB2BK123	8946	Green	Maintained Short Handle	4X / 65
GB2BK124	8947	Red	Maintained Short Handle	4X / 65
GB2BK125	8948	Amber	Maintained Short Handle	4X / 65



LED Three Position Selector Switch

Product Code	SKU Code	Color	Description	NEMA / IP Rating
GB2BK133	8949	Green	Maintained Short Handle	4X / 65
GB2BK134	8950	Red	Maintained Short Handle	4X / 65
GB2BK135	8951	Amber	Maintained Short Handle	4X / 65



LED Mushroom Head Push Button

Product Code	SKU Code	Color	Description	NEMA / IP Rating
GB2BW44	8952	Red	Mushroom Head 40mm Momentary	4X / 65
GB2BW43	8953	Green	Mushroom Head 40mm Momentary	4X / 65



LED Lamp Blocks

Product Code	SKU Code	Color	Description	NEMA / IP Rating
GB2BWL71024	8968	White	LED Block for Chrome Push Button 24VAC/DC	1 / 20
GB2BWL73024	8969	Green	LED Block for Chrome Push Button 24VAC/DC	1 / 20
GB2BWL74024	8970	Red	LED Block for Chrome Push Button 24VAC/DC	1 / 20
GB2BWL75024	8971	Amber	LED Block for Chrome Push Button 24VAC/DC	1 / 20
GB2BWL76024	8972	Blue	LED Block for Chrome Push Button 24VAC/DC	1 / 20
GB2BWL71125	8973	White	LED Block for Chrome Push Button 120VAC	1 / 20
GB2BWL73125	8974	Green	LED Block for Chrome Push Button 120VAC	1 / 20
GB2BWL74125	8975	Red	LED Block for Chrome Push Button 120VAC	1 / 20
GB2BWL75125	8976	Amber	LED Block for Chrome Push Button 120VAC	1 / 20
GB2BWL76125	8977	Blue	LED Block for Chrome Push Button 120VAC	1 / 20



Nylon Contact Blocks

Product Code	SKU Code	Color	Description	NEMA / IP Rating
GB2BE101	8966	Green	1 N/O Contact	1 / 20
GB2BE102	8967	Red	1 N/C Contact	1 / 20

*Lamp block module will accept up to 4 contact blocks.



Indicator Lamp & LED Blocks

Product Code	SKU Code	Color	Description	NEMA / IP Rating
GB2BVL71024	8956	White	LED Indicator Lamp Complete 24VAC/DC	4X / 65
GB2BVL73024	8957	Green	LED Indicator Lamp Complete 24VAC/DC	4X / 65
GB2BVL74024	8958	Red	LED Indicator Lamp Complete 24VAC/DC	4X / 65
GB2BVL75024	8959	Amber	LED Indicator Lamp Complete 24VAC/DC	4X / 65
GB2BVL76024	8960	Blue	LED Indicator Lamp Complete 24VAC/DC	4X / 65
GB2BVL71125	8961	White	LED Indicator Lamp Complete 120VAC	4X / 65
GB2BVL73125	8962	Green	LED Indicator Lamp Complete 120VAC	4X / 65
GB2BVL74125	8963	Red	LED Indicator Lamp Complete 120VAC	4X / 65
GB2BVL75125	8964	Amber	LED Indicator Lamp Complete 120VAC	4X / 65
GB2BVL76125	8965	Blue	LED Indicator Lamp Complete 120VAC	4X / 65



8980

22mm Legend Plates

Product Code	SKU Code	Description
GB2BY2301	8983	Legend Plate Blank
GB2BY2303	8984	Legend Plate Start
GB2BY2305	8985	Legend Plate Forward
GB2BY2307	8986	Legend Plate Up
GB2BY2308	8997	Legend Plate Down
GB2BY2311	8987	Legend Plate On
GB2BY2313	8988	Legend Plate Open
GB2BY2323	8989	Legend Plate Reset
GB2BY2364	8990	Legend Plate Auto-Hand
GB2BY2387	8991	Legend Plate Hand-Off-Auto
GB2BY2336	8992	Legend Plate Off-On
GB2BY2338	8993	Legend Plate Up-Down
GB2BY2330	8994	Legend Plate Emergency Stop
GB2BY2304	8995	Legend Plate Stop
GB2BY2306	8996	Legend Plate Reverse
GB2BY2314	8998	Legend Plate Close
GB2BY2321	8999	Legend Plate Inch
GB2AY9330	6000	Legend Plate Yellow Round 60mm Emergency Stop
GB2AY8330	6001	Legend Plate Yellow Round 90mm Emergency Stop
GB2RBX	8980	30mm Adapter Ring



Non Metallic Control Stations Complete

Product Code	SKU Code	Description	NEMA / IP Rating
GC1PBS142	6002	Red Mushroom Head Key to Release 1 N/C Contact	4X / 65
GC1PBS542	6003	Red Mushroom Head Twist to Release 1 N/C Contact	4X / 65
GC1PYBS542	6004	Red Mushroom Head Twist to Release 1 N/C Contact Yellow Cover	4X / 65
GC2P215	6005	Red & Green Flush Push Button 1 N/O & 1 N/C Contact	4X / 65
GC3P324	6006	Black, Red & White Flush Push Button 2 N/O & 1 N/C Contact	4X / 65



Non Metallic Control Stations Empty

Product Code	SKU Code	Description	NEMA / IP Rating
GC1P	6007	Single Hole Control Station	4X / 65
GC1PY	6008	Single Hole Control Station with Yellow Cover	4X / 65
GC2P	6009	Two Hole Control Station	4X / 65
GC3P	6010	Three Hole Control Station	4X / 65
GC4P	6011	Four Hole Control Station	4X / 65
GB2BE101BG	6012	1 N/O Contact Block for Control Station	1 / 20
GB2BE102BG	6013	1 N/C Contact Block for Control Station	1 / 20





Electrical & Industrial Product Catalog

Contact Us

▶ Plusrite USA

Head Office and West Coast Distribution Center
2000 S. Grove Ave. Building B
Ontario, CA 91761
T. (909) 930-6868
F. (909) 930-9988

East Coast Distribution Center
2511 Reliance Ave.,
Apex, NC 27539

▶ Plusrite Canada

Unit #106, 6249-205th St.
Langley, BC V2Y 1N7
T: (604) 533-8898
F: (604) 533-1158

www.gei-products.com